



# Global Scenic Services

*Entertaining ideas. Enhancing experiences.*

Leading provider of custom designs, scenery fabrication, staging and rentals for the entertainment and event industries.

Jim Malski | 203-334-2130 | [jmalski@globalscenicservices.com](mailto:jmalski@globalscenicservices.com)

# About Global Scenic Services

Our dedicated team of skilled professionals is prepared to tackle projects of any size, from local show or exhibit to nationally-recognized spectacle. Trusted by global brands and productions, we're an industrious team that produces high-caliber work quickly.

## Benefits of working with GSS:

- **Full-Service Shop** We're equipped to handle every aspect of your production needs, from producing or interpreting a creative vision, to fabrication, logistics, installation, and support. Our 50,000 sq. ft. shop is conveniently located in Connecticut with 12% lower labor costs than NY fabrication shops.
- **Flexible Service** Projecting a can-do attitude and a service-first philosophy, we ensure that every project is beautiful, functional, safe, as well as delivered and installed on budget and on time.
- **Professional Support** Every project benefits from our rapid development, continuous work, and complete support from concept to assembly and installation.





# About Global Scenic Services

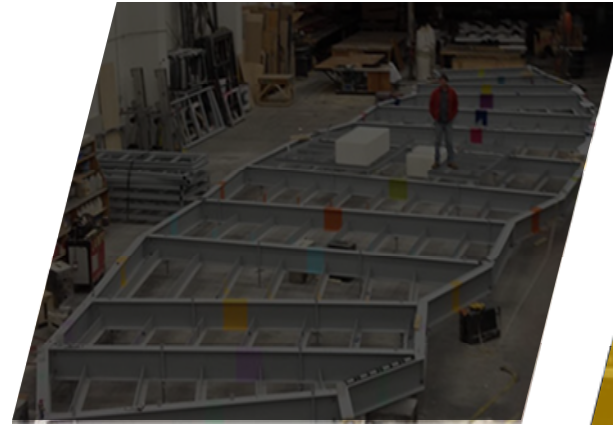
- **High-Impact Visual Experiences** Aesthetic impact is as important to us as logistic perfection. Our team prides itself on creating eye-catching environments and optimizing experiential wonders. From fantastical innovations to stunningly realistic elements, we work tirelessly to produce the perfect complement to every memorable show and event.
- **A-List Experience** With a portfolio like *Moulin Rouge* on Broadway to the Victoria's Secret Fashion Show and activations for H&M at Coachella, we have a proven track record of quality production and design at the highest level.





# Space to Work

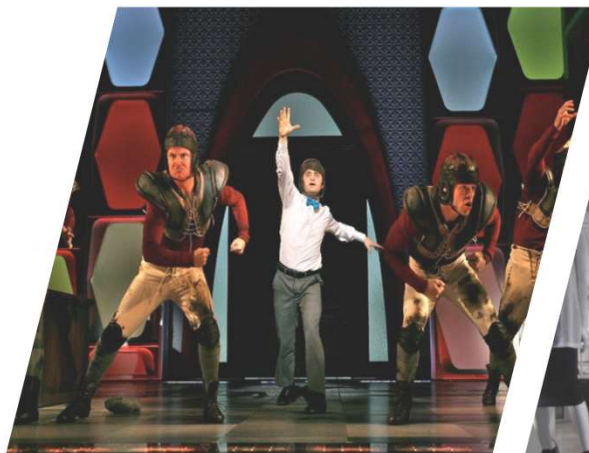
Innovation requires space, and we're lucky to have plenty. Our set fabrication facility is over 50,000 sq. ft. of constant productivity.





# Industries We Serve

- Brand Activation & Experiential Marketing
- Theatre Productions
- TV & Film
- Live Events
- Themed Entertainment
- Retail & Fashion
- Trade Shows & Exhibits
- Cruise Ships
- Museums
- Nature Centers
- Hotels & Casinos
- Haunted Attractions



[globalscenicservices.com](http://globalscenicservices.com)

46 Brookfield Ave., Bridgeport, CT

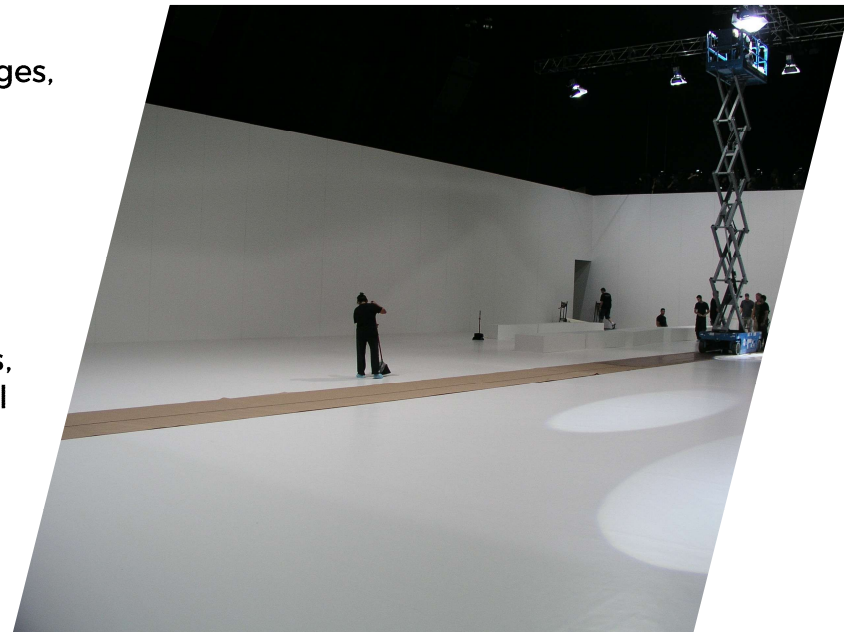


# Scope of Service



We imagine, make, deliver, and install custom sets, stages, automation and environments for events, shows and activations.

- Creative Services: Design, Mold Making and Casting, Sculpting, Textures and Finishes.
- Production, Construction, Assembly and Installation
- Scenery & Backdrop Fabrication: Creative Backdrops, Scenery, Unique Environmental Elements, Structural Props
- Support Structures & Stages
- Stage Automation & Moving Structures





# Services

Creative Services Include:

- Concept Renderings
- Spatial Planning
- Retail Interiors
- Event Design and Production
- Brand Activations
- CAD Design
- Mold Making and Casting/Rapid Prototyping
- Production Design
- Set Design
- Digital Content Development
- Projection Mapping
- Budgeting/Estimating
- Staging
- Automation
- CNC/Hotwire Foam/Sculpture
- Foam Coating
- CNC & Plasma Machining
- Metal Fabrication
- Crating
- Asset Storage





# Services

Textures, Finishes, Molds and Props

- We can replicate any environment imaginable. Our lightweight materials make larger-than-life features safe and easy to handle.







# Services

Realistic, Yet Practical, Lightweight and Cost-Effective Finishes

- Specialty Coatings and Textures Simulate Natural, Distressed, Aged and Weathered Effects
- GFRG, GFRC, FRP
- Spray/Casting Foams
- Silicones Acrylic, Latex, Polyurethane Rubber and a Variety of Other Composite Materials
- Proprietary Coloring to Simulate Period Pigments, Metal Coating and Patinas



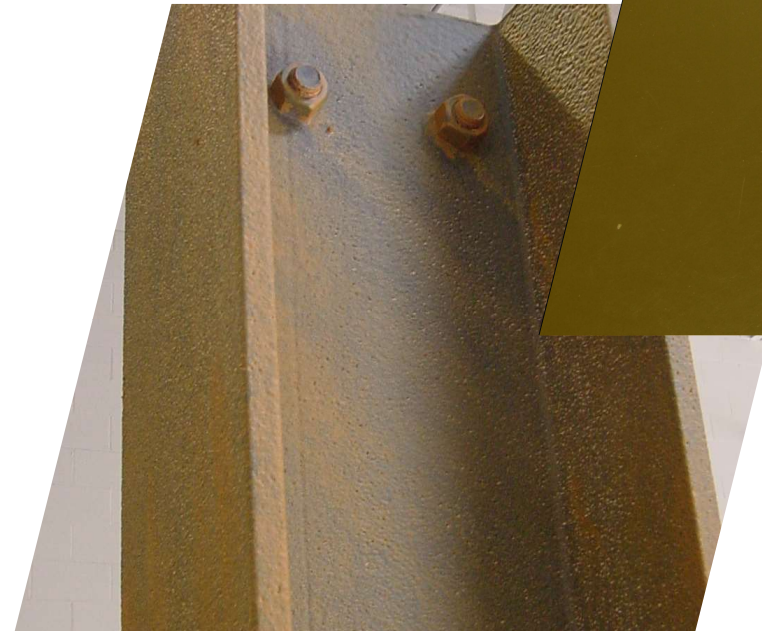


# Services

## Simulated Metal Finishes

- Composite Metallizing Technology Available in Wide Array of Finishes
- Patented Cold Sprayable Metals
- Incredibly Realistic Look & Feel
- Acts Like Real Metal Without the Weight and Expense

Aluminum | Brass | Bronze | Copper | Iron | Nickel-Silver | White Bronze

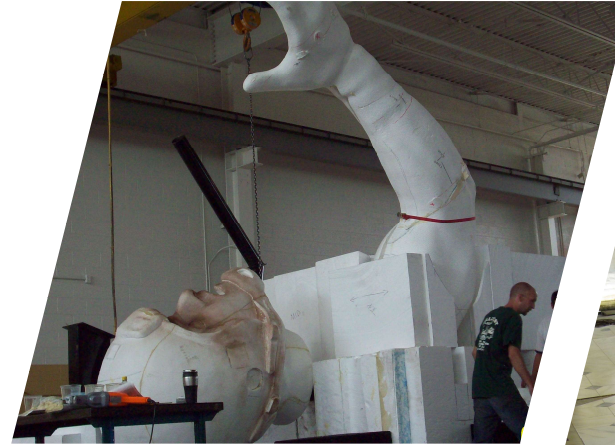




# Services

## Rapid Prototyping

- Specialty Mold Making & Casting Techniques
- Replicate Virtually Any Texture
- Variety of Coating Materials and Proprietary Coloring Processes

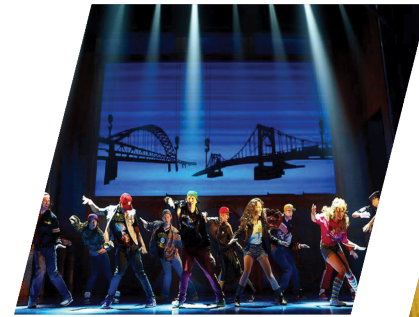




# Services

## Automation: Quiet and Compact

- GSS provides state-of-the-art automation capabilities for live events, theatre productions and more.
  - Exclusive distributor of the European developed **Silicon Automation System** by Silicon Theatre Scenery for the United States that is quieter, more reliable and easier to maintain than any system in the US Market
  - Has been used in Disney Productions around the world including for The Lion King, The Little Mermaid, Tarzan and Mary Poppins
  - GSS has deployed in-theatre production since 2014 for Rocky the Musical, Frozen @ Hyperion Theatre, Tangled, Jay Chou's The Secret and Peter Pan Live

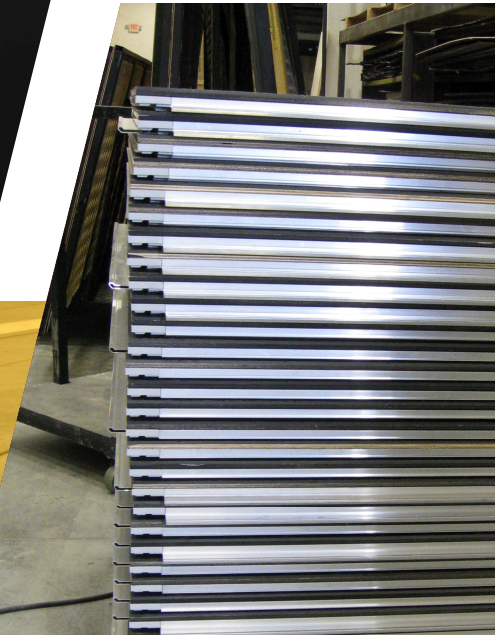




# Services

## Rental Equipment

- Rigging
- Staging
- Electric
- Automation
- Scenic
- Tracks





# Services

Exclusive distributor of DeckTo/Go

- Stage Deck Systems
- Tiered Seating
- Flooring
- Risers
- Platforms including Frames, Guardrails, Chair Stoppers and Brackets

For rent and permanent installation

**TO/GO**





Creating stunning visual experiences.

*Featured projects for select industries.*



# Theatre

- Broadway, Off-Broadway and local theatre companies
- Full Automation Capabilities
- Advanced and Innovative Fabrication Solutions



**BURN THIS**



MERRILY WE ROLL ALONG





# Ragtime





# Springsteen On Broadway



[globalscenicservices.com](http://globalscenicservices.com)

46 Brookfield Ave., Bridgeport, CT 06610

# Moulin Rouge



[globalscenicservices.com](http://globalscenicservices.com)

46 Brookfield Ave., Bridgeport, CT 06610

# Head Over Heels



[globalscenicservices.com](http://globalscenicservices.com)

46 Brookfield Ave., Bridgeport, CT 06610

# SKINTIGHT





# Rocky The Musical







# Annie



[globalscenicservices.com](http://globalscenicservices.com)

46 Brookfield Ave., Bridgeport, CT 06610



# The Price





# Lillian Hellman's The Little Foxes





# Vanya Sonia Masha Spike



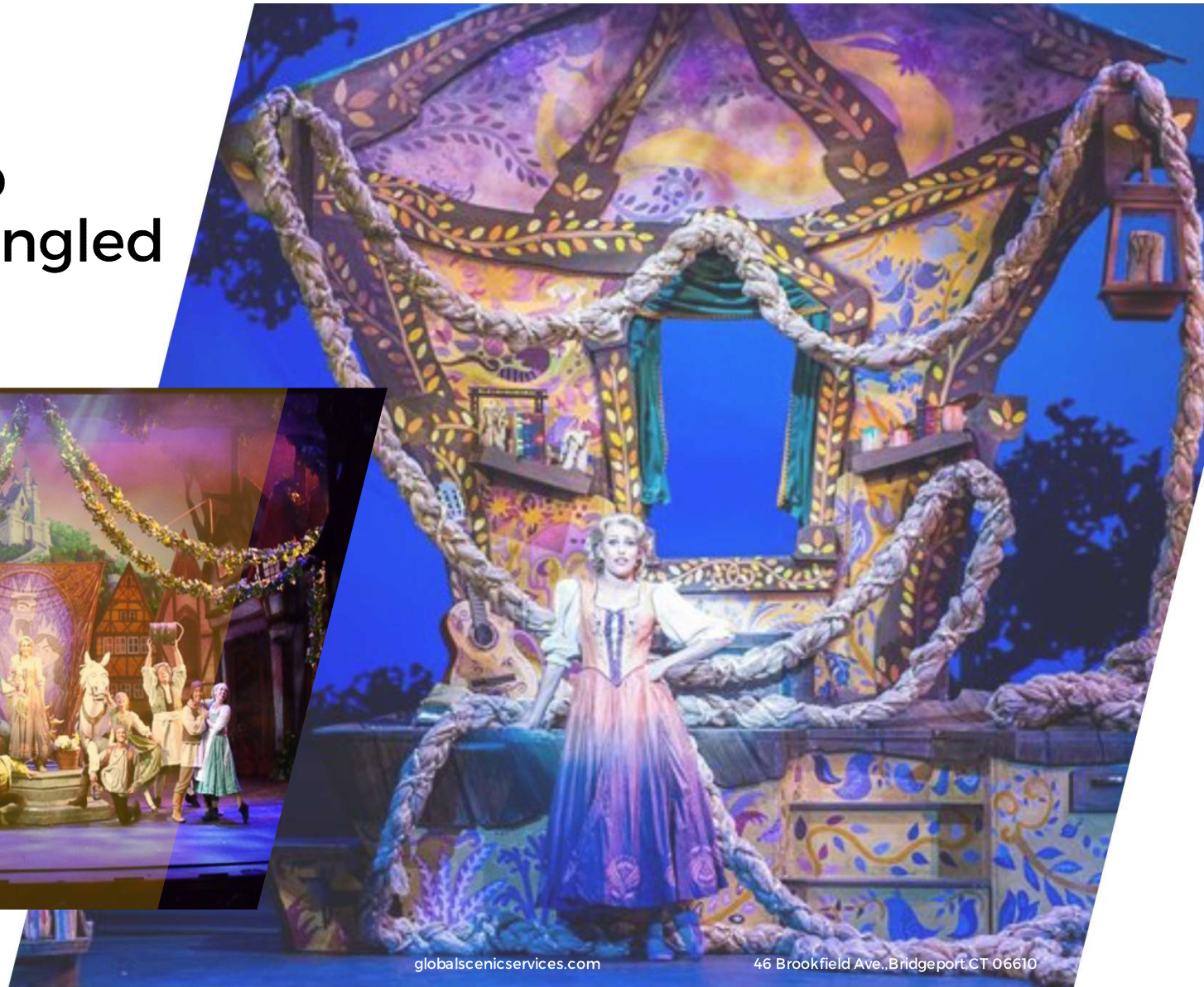


Nice Work If  
You Can Get It





# Cruise Ship Theatre: Tangled

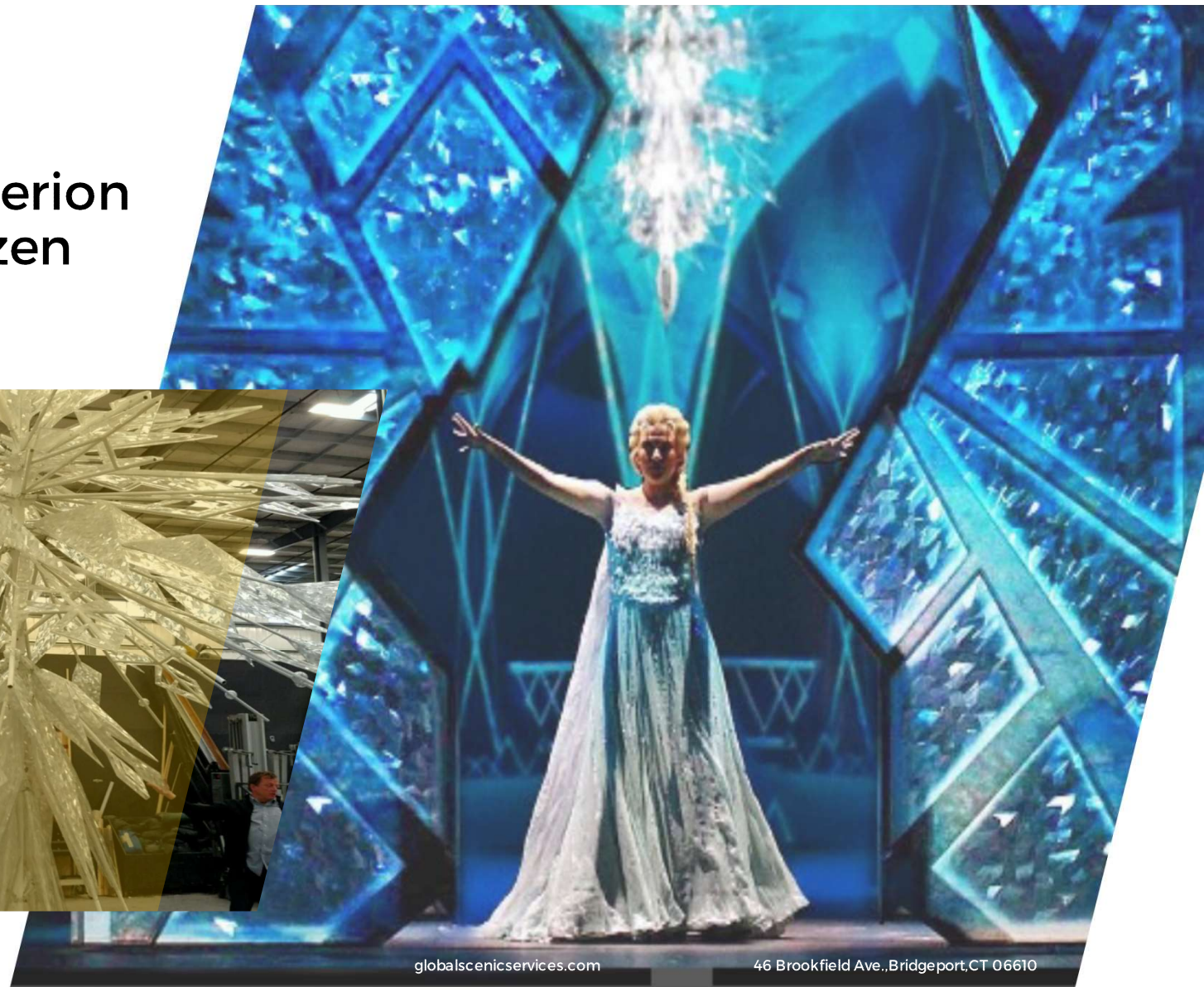
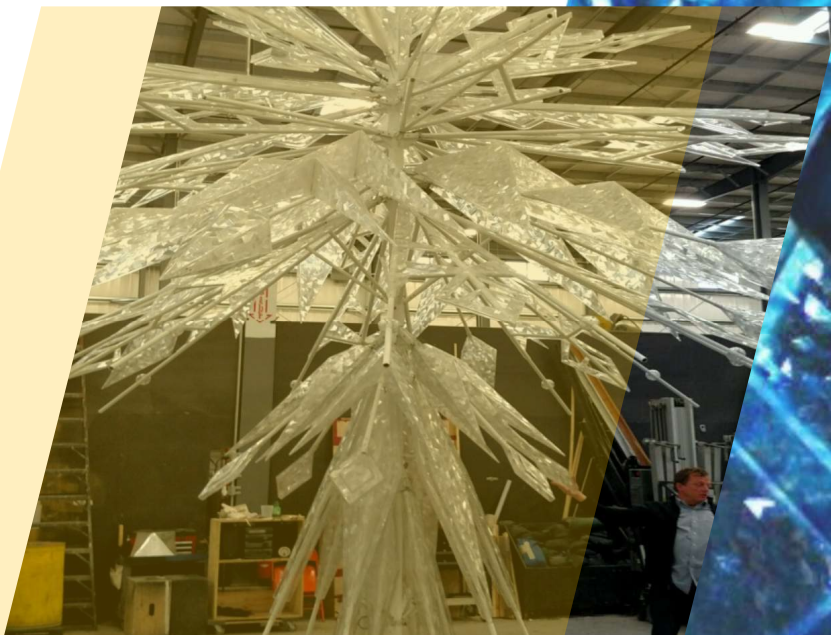


[globalscenicservices.com](http://globalscenicservices.com)

46 Brookfield Ave., Bridgeport, CT 06610



# Disney's Hyperion Theatre: Frozen





# The American Ballet Theatre





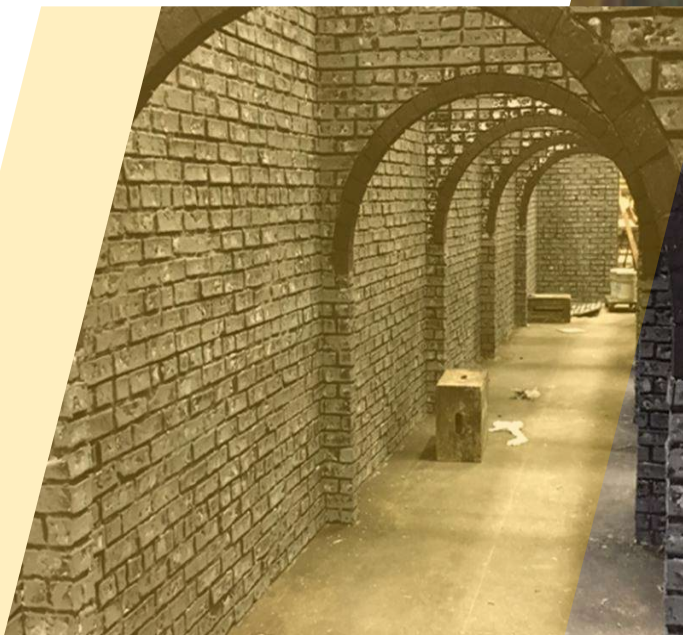


## TV & Film

- Interpretation, Build, Fabrication, Management, Carpentry, Rigging, Automations, Electrics, Softgoods, Printing, Rentals
- Staging and Support Structures
- Stage Engineering: Automation, scenic & staging contexts and extras
- Truss: Supply available in stock, or order bespoke in-house truss



# Forged In Fire





# The Weekend for The Tonight Show Starring Jimmy Fallon



[globalscenicservices.com](http://globalscenicservices.com)

46 Brookfield Ave., Bridgeport, CT 06610



# NBC Live Musicals: The Wiz Live!



[globalscenicservices.com](http://globalscenicservices.com)

46 Brookfield Ave., Bridgeport, CT 06610



# TODAY SHOW DESK 2014



COURTESY: INCO



# THE APPROVAL MATRIX





# NBC Live Musicals: Peter Pan Live!

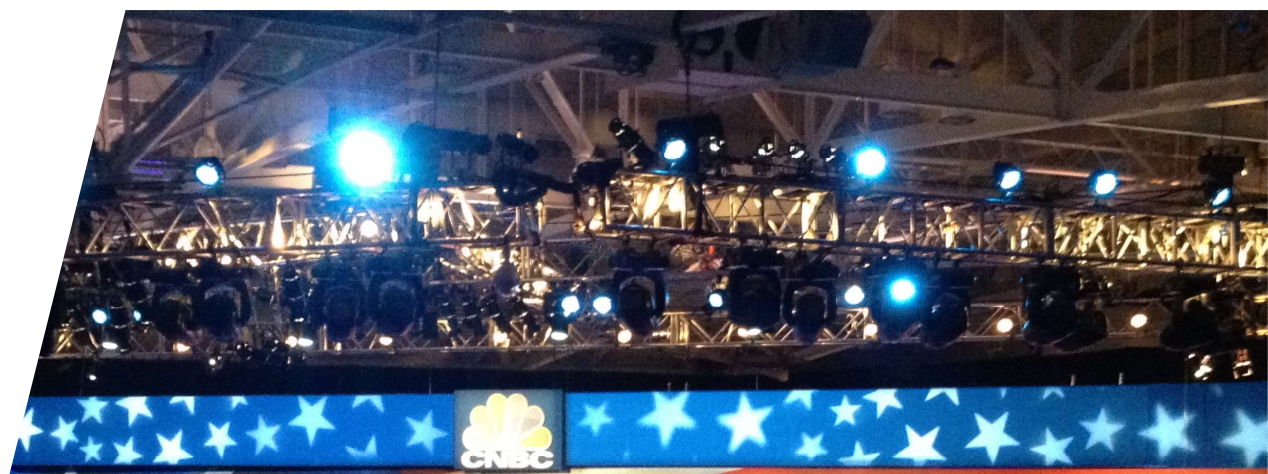


[globalscenicservices.com](http://globalscenicservices.com)

46 Brookfield Ave., Bridgeport, CT 06610



# CNBC Debate







# Jerry Springer



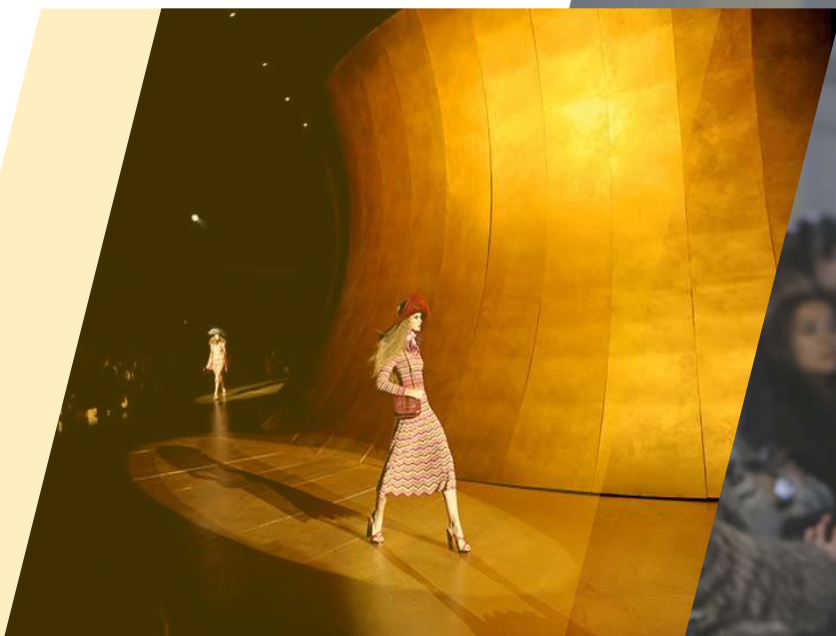


# Live Events

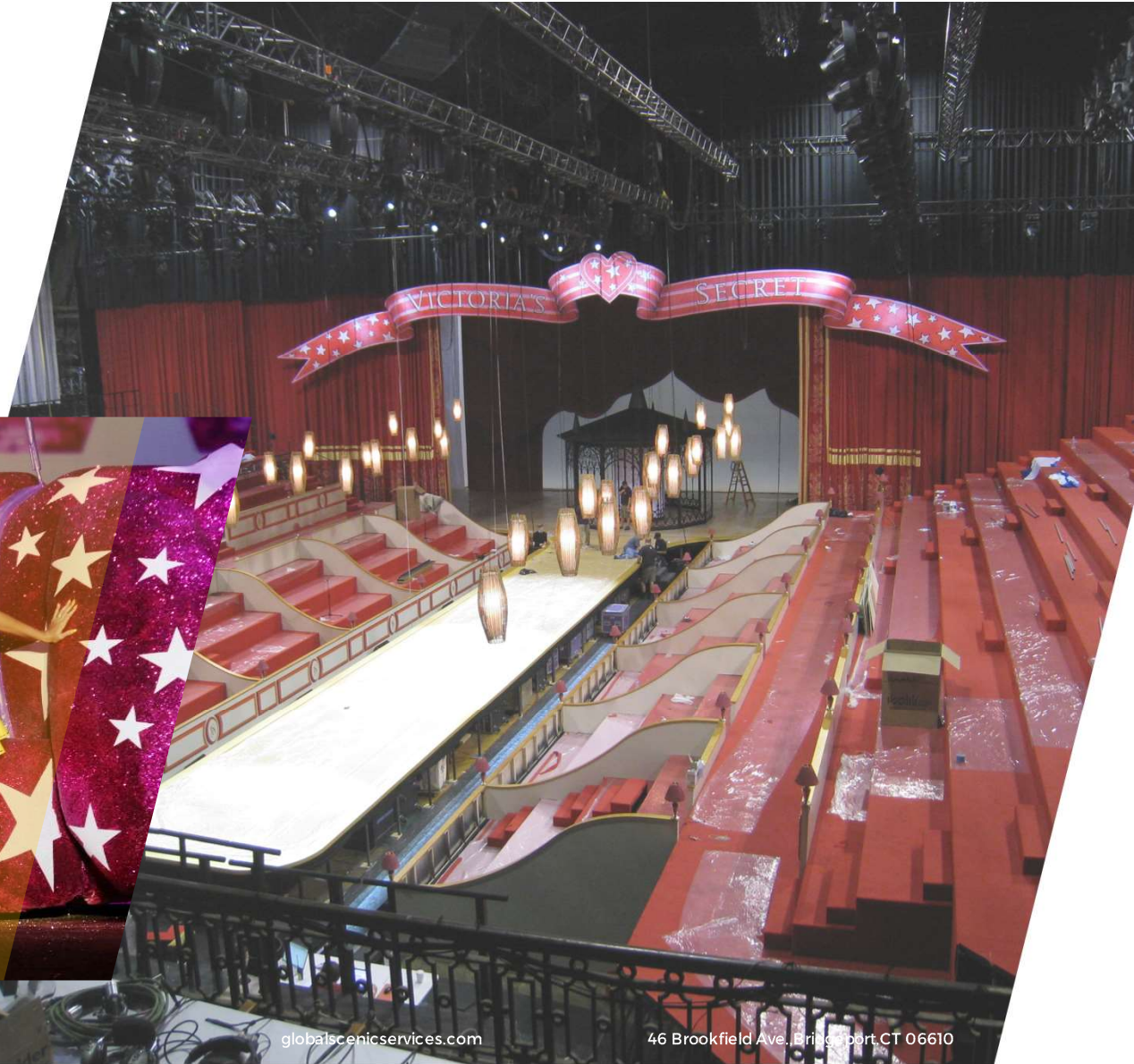
- Flawless staging, rigging, props, and other fabrication and accessories that make an impact



# New York Fashion Week NYC 2009-2017



# Victoria's Secret Fashion Show 2010-2017





# MTV Music Awards 2018 Ariana Grande





# Brand Activations, Themed Entertainment & Experiential Marketing



# 5 Wits Espionage



# Hershey Park Chocolate World





OGX





# FAO Schwarz Harry Potter



[globalscenicservices.com](http://globalscenicservices.com)

46 Brookfield Ave., Bridgeport, CT 06610

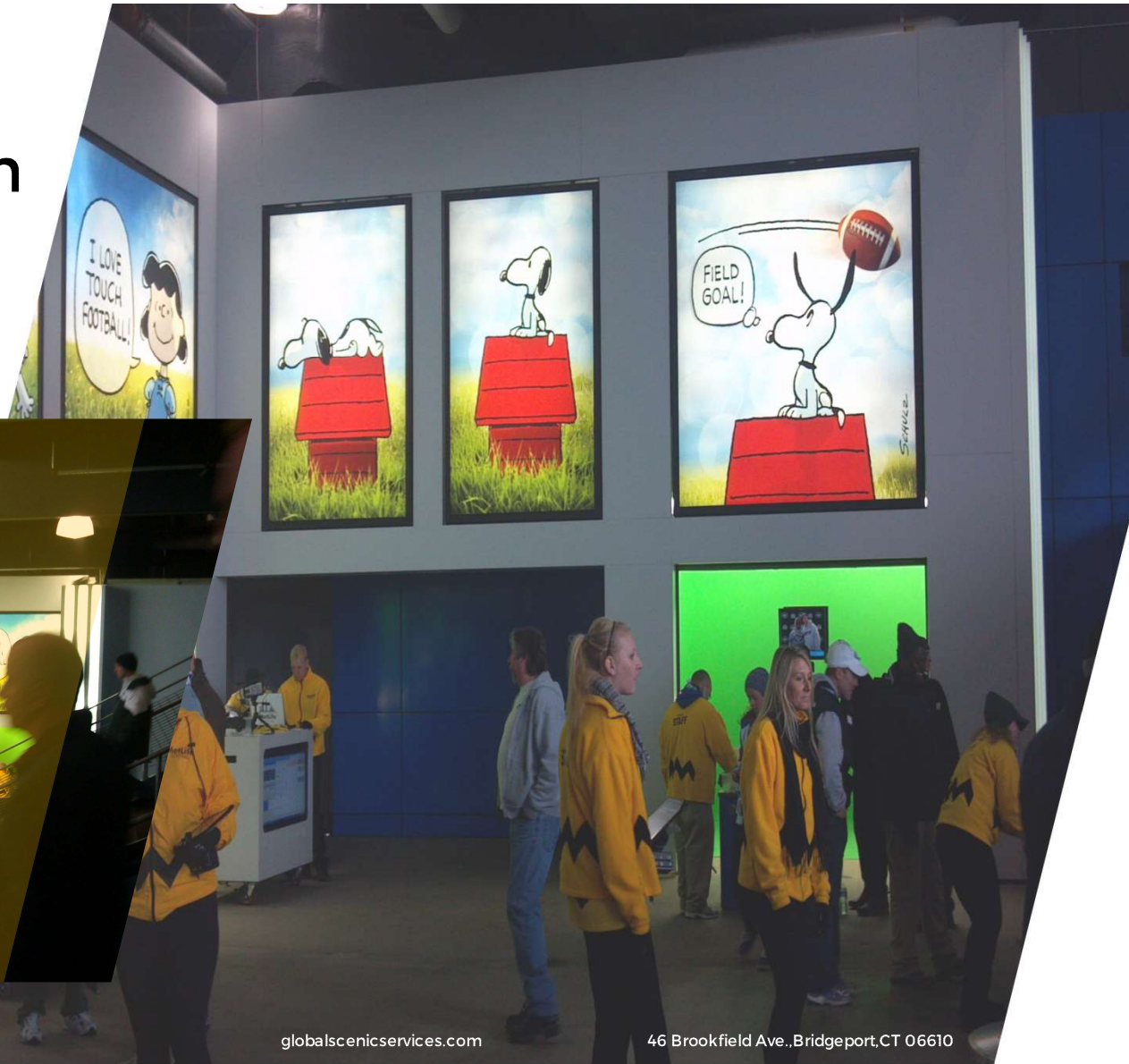


# H&M Coachella 2015-2017





# Met Life Stadium West Gate Entrance





# Retail



[globalscenicservices.com](http://globalscenicservices.com)

46 Brookfield Ave., Bridgeport, CT 06610



Moncler



[globalscenicservices.com](http://globalscenicservices.com)

46 Brookfield Ave., Bridgeport, CT 06610



# Tradeshaw & Exhibits

- Hotels, Casinos
- Water Parks
- Haunted Attractions
- Theme Parks
- Trade Show Booths
- Product and Brand Exhibits
- Retail Interiors
- Zoos, Museums, Public Aquariums
- Restaurant Designs
- Commercial Design



# Harry Potter/Audible Comic Con







# Instagram Vidcon





# Contact

Global Scenic Services  
46 Brookfield Ave., Bridgeport, CT 06610

203-334-2130

Jim Malski at [jmalski@globalscenicservices.com](mailto:jmalski@globalscenicservices.com)

[www.globalscenicservices.com](http://www.globalscenicservices.com)